

PC EXHIBIT G

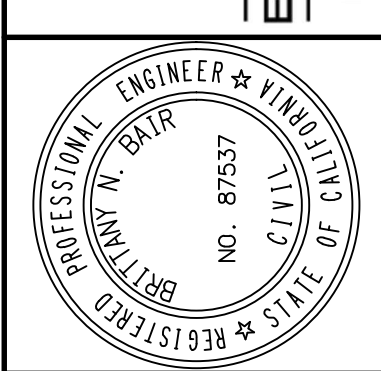
SHEET **C3**

CONCEPTUAL IMPROVEMENT PLANS FOR
2300 WESTBROOK BLVD,
 ROSEVILLE, CA 95747
PRELIMINARY UTILITY PLAN
 CITY OF ROSEVILLE

PREPARED FOR:
WEST ROSEVILLE, LLC.
 1420 ROCKY RIDGE DR., SUITE 265
 ROSEVILLE, CA 95661
 PHONE: (916) 774-3400
 EMAIL: RYAN@COMMUNITIES.COM
 CONTACT: RYAN O'KEEFE

BRITTANY N. BAIR, RCE, No. 87637
 DATE: 09/30/2023
 EXP. DATE: 09/30/2023

ENGINEERING
 1350 DESMOND LANE
 NEWCASTLE, CA 95658



811
 Know what's below.
 Call before you dig.

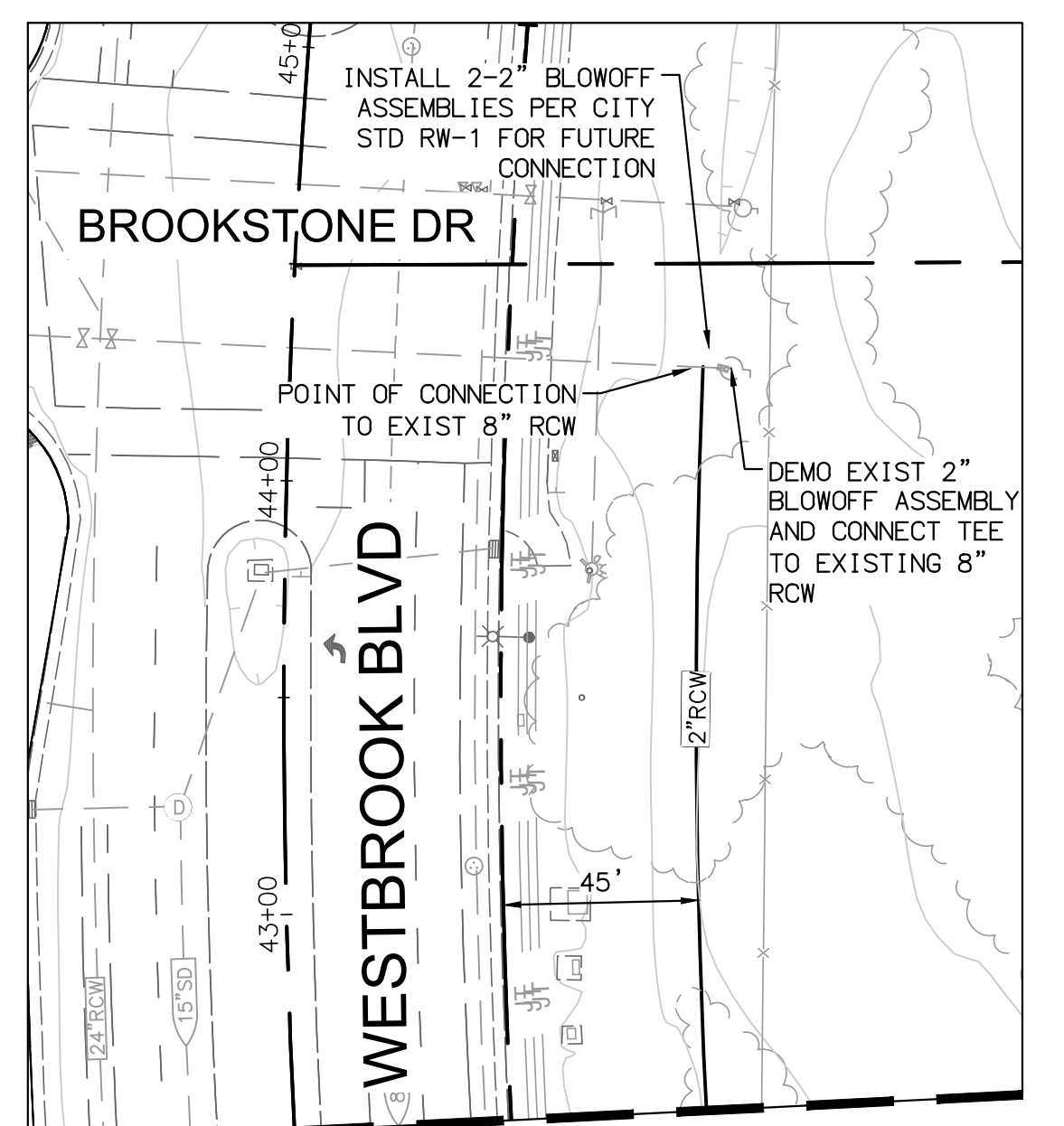
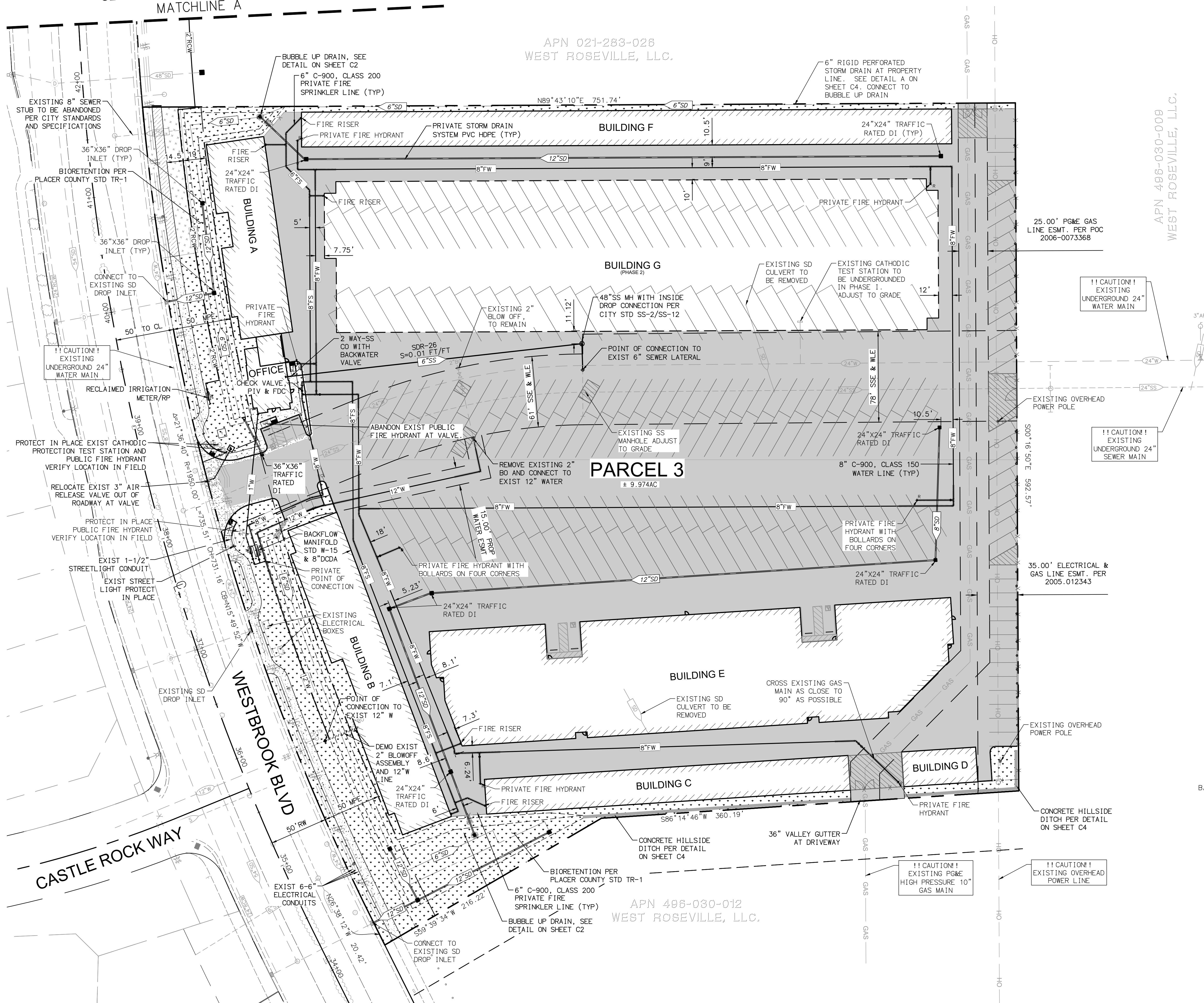
SEE RIGHT FOR CONTINUATION
 MATCHLINE A

APN 021-283-026
 WEST ROSEVILLE, LLC.

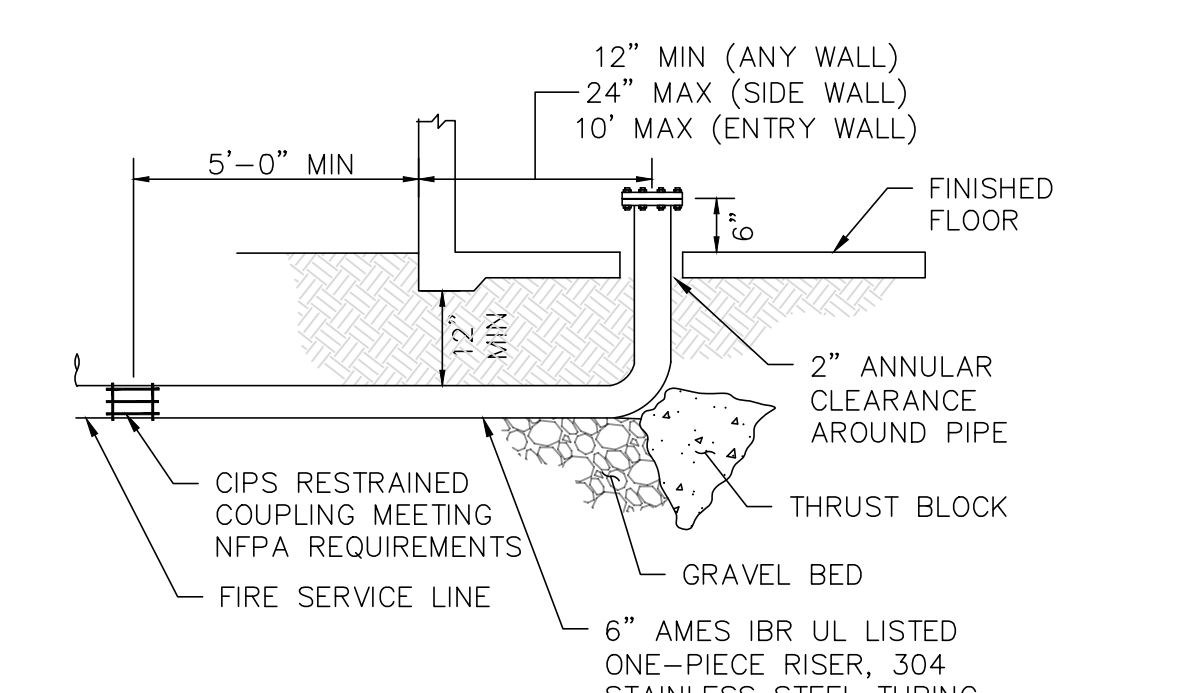
APN 496-030-009
 WEST ROSEVILLE, LLC.

PARCEL 3
 ± 9.974AC

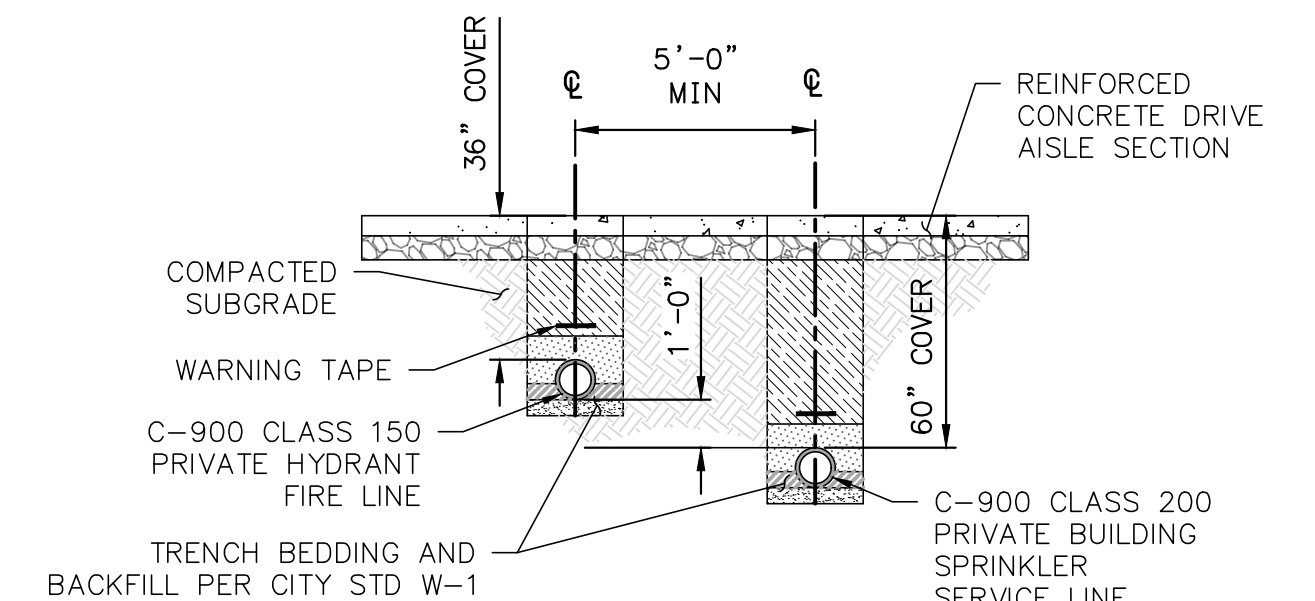
APN 496-030-012
 WEST ROSEVILLE, LLC.



MATCHLINE A
 SEE LEFT FOR CONTINUATION



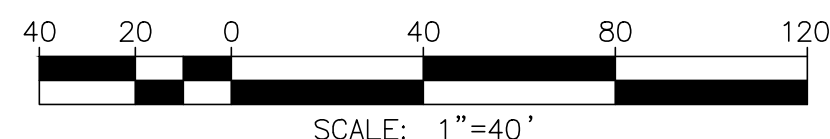
FIRE RISER DETAIL
 NO SCALE



PRIVATE WATER LINE SPACING DETAIL
 NO SCALE

GENERAL UTILITY NOTES:

- ROSEVILLE ELECTRIC TO REPLACE POLE AT DEVELOPER'S EXPENSE
- PERIMETER FENCING TO BE GROUNDED PER ROSEVILLE ELECTRIC SPECIFICATIONS
- CONTRACTOR TO USE EXTREME CAUTION WHEN CONSTRUCTING FENCE OVER EXISTING UTILITIES.
- ALL STORM DRAIN IS TO HAVE A MINIMUM SLOPE OF 0.005 (FT/FT) UNLESS SPECIFIED OTHERWISE



Plotted: Apr. 26, 2022 - 5:09pm by: britb
 Drawing Name: C:\Users\britb\OneDrive\Engineering\Projects\10.025\DWG\MP\EXHIBIT_G_03_UTILITY_PLAN.dwg
 Project: 10.025\DWG\MP\EXHIBIT_G_03_UTILITY_PLAN.dwg